

Lower Thames Crossing
6.2 Environmental Statement
Figure 2.4 - Environmental
Masterplan Sections 1 and 1A
(1 of 10)
(Tracked changes version)

APFP Regulation 5(2)(a)

Infrastructure Planning (Applications:
Prescribed Forms and Procedure)
Regulations 2009

Volume 6

DATE: September 2023

DEADLINE: 4

Deleted: August

Deleted: 2

Planning Inspectorate Scheme Ref: TR010032
Application Document Ref: TR010032/APP/6.2

VERSION: 3.0

Deleted: 2

Revision history

Version	Date	Submitted at
1.0	31 October 2022	DCO Application
2.0	3 August 2023	Deadline 2
3.0	19 September 2023	Deadline 4

Lower Thames Crossing

6.2 Environmental Statement

Figure 2.4 - Environmental Masterplan Sections 1 and 1A (1 of 10)

(Tracked changes version)

List of contents

	Page number
1 Environmental Masterplan: Sections 1 and 1A.....	1
1.1 Schedule of Plans included in this application document.....	1
1.2 Section 1 (Sheets 1-8)	2
1.3 Section 1A (Sheets 9-11).....	3
1.4 Scheme Overview.....	4
1.5 Environmental Masterplan Legend	6
1.6 Section 1	8
1.7 Section 1A	17

1 Environmental Masterplan: Sections 1 and 1A

1.1 Schedule of Plans included in this application document

1.2 Section 1 (Sheets 1-8)

Drawing Number and Title	Application Document Ref	Revision
HE540039-CJV-EGN-S01_EN000000_Z-DR-ZZ-00001 – Section 1 Overview	TR010032/APP/6.2	P02
HE540039-CJV-EGN-S01_EN000000_Z-DR-ZZ-00002 - Section 1 Sheet 1	TR010032/APP/6.2	P02
HE540039-CJV-EGN-S01_EN000000_Z-DR-ZZ-00003 - Section 1 Sheet 2	TR010032/APP/6.2	P02
HE540039-CJV-EGN-S01_EN000000_Z-DR-ZZ-00004 - Section 1 Sheet 3	TR010032/APP/6.2	P02
HE540039-CJV-EGN-S01_EN000000_Z-DR-ZZ-00005 - Section 1 Sheet 4	TR010032/APP/6.2	P01.6
HE540039-CJV-EGN-S01_EN000000_Z-DR-ZZ-00006 - Section 1 Sheet 5	TR010032/APP/6.2	P01.2
HE540039-CJV-EGN-S01_EN000000_Z-DR-ZZ-00007 - Section 1 Sheet 6	TR010032/APP/6.2	P01.2
HE540039-CJV-EGN-S01_EN000000_Z-DR-ZZ-00009 - Section 1 Sheet 8	TR010032/APP/6.2	P01.2

Deleted: P01.6

1.3 Section 1A (Sheets 9-11)

Drawing Number and Title	Application Document Ref	Revision
HE540039-CJV-EGN-S01_EN000000_Z-DR-ZZ- 50000 - Section 1a Sheet 9	TR010032/APP/6.2	P02
HE540039-CJV-EGN-S01_EN000000_Z-DR-ZZ- 50001 - Section 1a Sheet 10	TR010032/APP/6.2	P02
HE540039-CJV-EGN-S01_EN000000_Z-DR-ZZ- 50002 - Section 1a Sheet 11	TR010032/APP/6.2	P02

Deleted: 00010

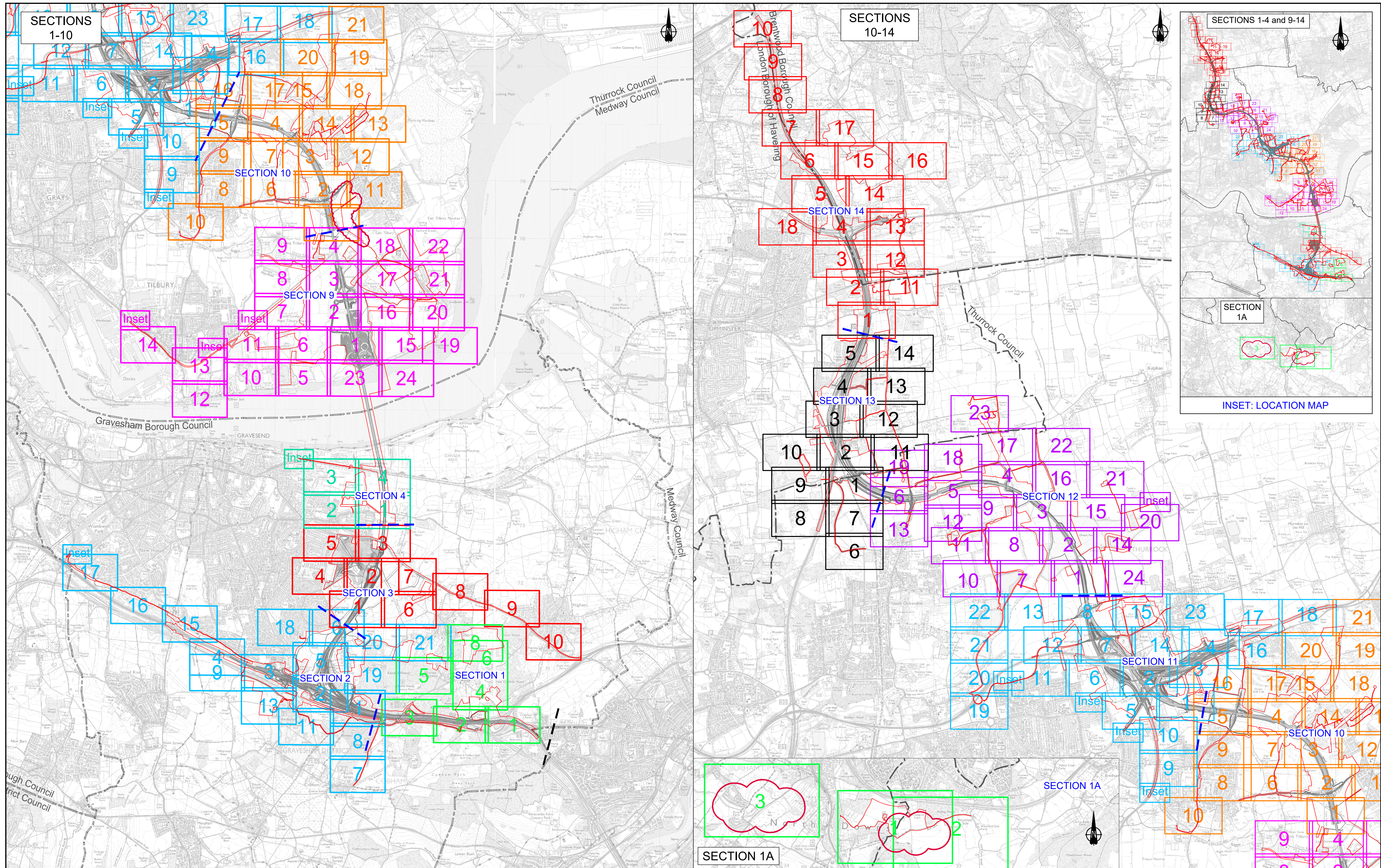
Deleted: P01.1

Deleted: 00011

Deleted: P01.1

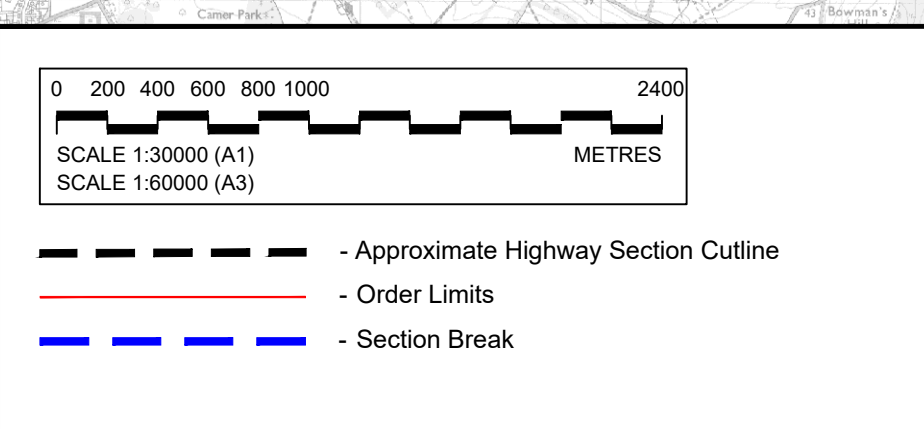
Deleted: 00012

1.4 Scheme Overview



Contains Ordnance Survey data. © Crown copyright and database rights 2022. Ordnance Survey 100030649

P01	S2	27/10/2022	LD
P02	S8	19/09/2023	DEADLINE 4
Rev	Status	Rev. Date	Purpose of revision
		Drawn	Check'd
		Appr'd	



Section Layout Key:

1	Section S1 (Sheets 1 - 8)	9	Section S9 (Sheets 1 - 24)
1A	Section S1A (Sheets 1 - 3)	10	Section S10 (Sheets 1 - 21)
2	Section S2 (Sheets 1 - 21)	11	Section S11 (Sheets 1 - 22)
3	Section S3 (Sheets 1 - 10)	12	Section S12 (Sheets 1 - 24)
4	Section S4 (Sheets 1 - 4)	13	Section S13 (Sheets 1 - 14)
5	Section S5 to S8: Project route in tunnel, therefore no Environmental Masterplan coverage	14	Section S14 (Sheets 1 - 18)

NOTE: Development of the Project design has resulted in the removal of some sheets forming part of the Environmental Masterplan, where acquisition of land for the Project is no longer required. In this instance, the original sheet numbering has been retained and therefore the sheet numbering shown on this Scheme Overview plan is not always consecutive.

For information, the following sheets have been omitted:

Section 1

- Sheet 7 (HE540039-CJV-EGN-S01_EN000000_Z-DR-ZZ-00008)

Section 2

- Sheet 10 (HE540039-CJV-EGN-S02_EN000000_Z-DR-ZZ-00011)
- Sheet 12 (HE540039-CJV-EGN-S02_EN000000_Z-DR-ZZ-00013)
- Sheet 14 (HE540039-CJV-EGN-S02_EN000000_Z-DR-ZZ-00015)

Client

Project

LOWER THAMES CROSSING

Status	DCO Examination	Original Size	A1	Revision	P02
Application Document Number	TR010032/APP/6.2	Scale	AS SHOWN		
Drawing title	ENVIRONMENTAL MASTERPLAN SCHEME OVERVIEW				
Drawing Number	HE540039-CJV-EGN-SZZ_EN000000_Z-DR-ZZ-00002				

1.5 Environmental Masterplan Legend

EXISTING FEATURES

General Features

- Existing WCH Route
- Overhead Power Lines

Environmental Features

- Retained Woodland, Trees and Hedges (within Order Limits)
- Retained Woodland, Trees and Hedges (outside Order Limits)
- Waterbodies / Ponds
- Watercourses
- Tree Preservation Orders Area
- Individual Tree Preservation Orders
- Veteran Tree

PROPOSED PROJECT FEATURES

- Order Limits
- Permanent Acquisition of Land

General Project Features

- Existing Overhead Power Lines to be Removed
- Indicative Diverted and Modified Overhead Power Lines
- Proposed / Improved WCH Route
- Diverted / Redesignated WCH Route
- Proposed Carriageway
- Proposed Retaining Wall
- Proposed Cutting
- Proposed Embankment
- Proposed False Cutting Earthwork (up to 4m height above carriageway level typically at 1(v) 4(h) gradient)
- Proposed Watercourse Diversion
- Proposed Attenuation Ponds / Water Bodies
- Proposed Highway Estate Boundary Fencing
- Reinstated HS1 'Meshed' Fencing
- Proposed Security Fencing (incorporating highway boundary fence)
- Proposed Fencing Gates
- Proposed Tunnel Portal Building Outline (sub-surface)
- Proposed Highway Lighting and Gantry
- Proposed Green Bridge
- Proposed Traveller Site Replacement

General Project Features cont.

- Proposed Replacement Open Space
- Proposed Replacement Common Land
- Proposed Recreational Sites

PROPOSED LANDSCAPE ELEMENTS

Grassland (LE 1)

- LE 1.3 Species Rich Grassland
- LE 1.31 Species Rich Chalk Grassland
- LE 1.32 Species Rich Annual Wildflower Grassland
- LE 1.4 Rock and Scree

Planting (LE 2)

- LE 2.1 Woodland
- LE 2.11 Woodland With Non-Native Species
- LE 2.14 Wet / Carr Woodland
- LE 2.2 Woodland Edge
- LE 2.22 Scrub Woodland
- LE 2.4 Linear Belt of Shrubs and Trees
- LE 2.5 Shrubs With Intermittent Trees
- LE 2.7 Scattered Trees
- LE 2.8 Scrub / Scattered Scrub

Hedges (LE 4)

- LE 4.3 Native Species Hedge (untrimmed)
- LE 4.4 Native Hedgerow With Trees

Individual Trees (LE 5)

- LE 5.1 Individual Trees

Wetland Habitats (LE 6)

- LE 6.11 Water Bodies – Standing Water
- LE 6.12 Water Bodies and Associated Plants – Shallow Scrape Habitat
- LE 6.2 Banks and Ditches
- LE 6.21 Banks and Ditches – High Tide Roost Features
- LE 6.4 Wet Grassland

General Project Features cont.

- LE 6.41 Marsh and Wet Grassland – Coastal Grazing Marsh
- LE 7.2 Green Roof
- LE 7.3 Car Park
- LE 7.4 Reinforced Earth Bund

Ecological Habitats (LE 8)

- LE 8.1 Open Mosaic Habitat
- LE 8.2 Ancient Woodland Compensation Planting
- LE 8.3 Woodland Mitigation Planting
- LE 8.4 Wetland / Fenland Creation
- LE 8.5 Ecology Pond (Indicative symbol only)
- LE 8.6 Acid Grassland Soil Salvage
- LE 8.7 Nitrogen Deposition (NDEP) Compensation Area

Earthworks

- Proposed Contours

PROPOSED ENVIRONMENTAL ELEMENTS

Noise (E 1)

- E 1.2 Acoustic Barrier-Built Elements (typically incorporating highway boundary fence)

Water (E 2)

- Flood Compensation Areas (E2-FCA)
- Flood Defence (E2-FD)

Ecological (E 3)

- E 3.2 Ecological Habitat Creation and Receptor Sites for Protected Species
- E 3.2 Ecological Protection Measures – Dormouse Boxes
- E 3.2 Ecological Protection Measures – Bat / Bird Boxes
- E 3.2 Ecological Protection Measures – Ecological Culvert
- E 3.2 Ecological Protection Measures – Bat Barn Block
- E 3.2 Ecological Protection Measures – Ecological Fencing (incorporating highway boundary fence)

NOTES:

Land Reinstatement

The Environmental Masterplan is intended to show the permanent landscaping and environmental mitigation features that are embedded in the operational design. Land temporarily impacted by construction would be reinstated to its former condition and composition upon completion, as far as reasonably practicable and as provided for in DCO Article 35, unless otherwise shown in the Environmental Masterplan.

WCH Terminology and Route Information

The term 'WCH Routes' (which includes Public Rights of Way) refers to routes for walkers, cyclists and horse riders and is used in the broad sense within the Environmental Masterplan to refer to routes intended for at least one (but not necessarily more than one) of those users. For further information, please refer to the Rights of Way and Access Plans (Application Document 2.7) and the draft Development Consent Order (Application Document 3.1).

Veteran Trees

Veteran trees shown on the Environmental Masterplan include those identified in the Ancient Tree Inventory and project-identified potential ancient or veteran trees.

Outline Landscape and Ecological Management Plan

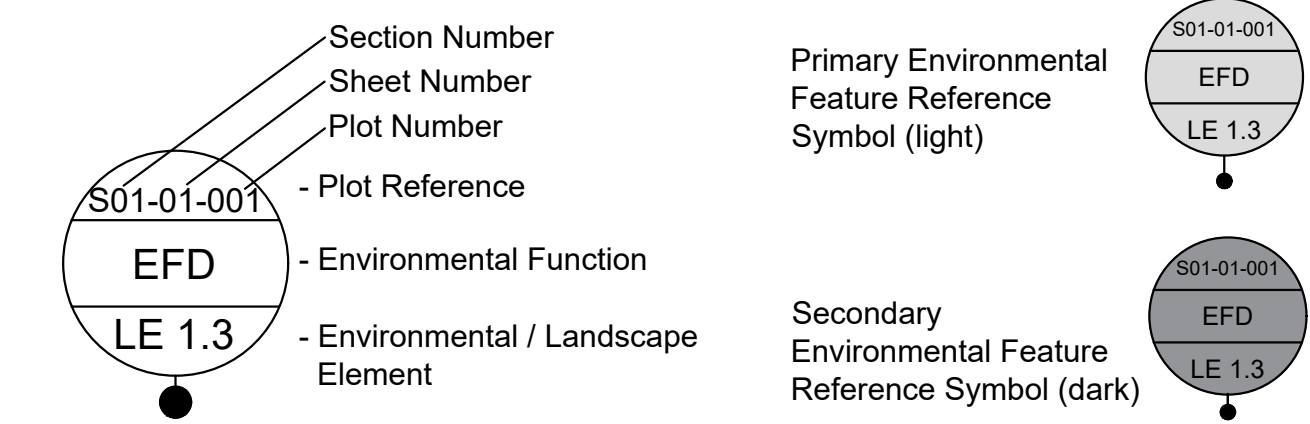
The outline Landscape and Ecology Management Plan (LEMP) separately sets out the proposed management for the environmental / landscape elements shown on the Environmental Masterplan. The Environment Masterplan secures the spatial extent and location of the environmental / landscape elements detailed within the outline LEMP. The outline LEMP details the management regimes, management expectations and monitoring requirements for the proposals in each land parcel shown on the Environmental Masterplan. It focuses on the management requirements for land parcels to be permanently acquired within the Order Limits and which perform specific landscape and ecological mitigation functions for the Project. For further detail regarding management requirements and principles, please refer to the outline LEMP (Application Document 6.7).

Existing WCH Routes

Existing WCH route information is based on Local Authority data. For further details, please refer to the relevant Local Authority Definitive Public Right of Way Map and Statement.

Environmental Feature Reference Symbol

An Environmental Feature Reference Symbol is provided for each environmental / landscape element. This contains a Plot Reference, the Environmental Function and the specific Landscape / Environmental Element. The Plot Reference is unique to each element labelled, and comprises the Section number, Sheet number and unique Plot number. Additional Environmental Feature Reference Symbols have been attributed to elements which span more than one page. The differences between the initial (Primary) Environmental Feature Reference Symbol and any additional (Secondary) versions are shown below.



Environmental Functions (EF)

- EFA Visual Screening
- EFB Landscape Integration
- EFC Enhancing the Built Environment
- EFD Nature Conservation and Biodiversity
- EFE Visual Amenity
- EFF Heritage
- EFG Auditory Amenity
- EFH Water Quality
- EFJ Agricultural / Highway Boundary
- EFK Access

Project Design Report

For further detail on the Landscape Design and Special Category Land shown within these plans, as well as the associated background and approach, please refer to the Project Design Report, Volume 2 Book of Plans, and Design Principles document (Application Documents 7.4, 6.2 and 7.5 respectively).

Contains Ordnance Survey data. © Crown copyright and database rights 2022. Ordnance Survey 100030649

Rev	Status	Rev. Date	Purpose of revision	Drawn	Check'd	Apprv'd

LOWER THAMES CROSSING

Status: Initial Status or WIP

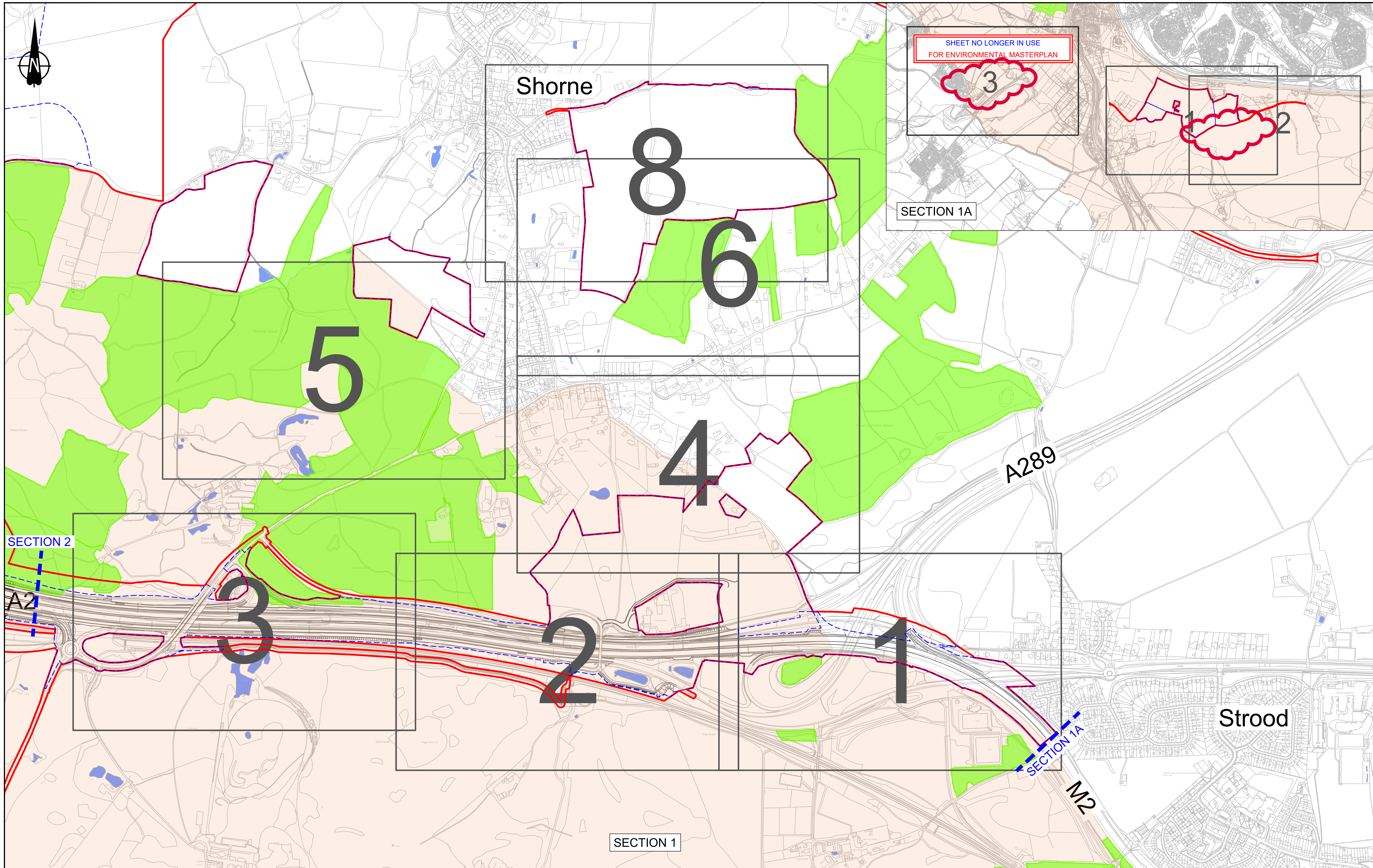
Application Document Number: TR010032/APP/6.2

Drawing title: ENVIRONMENTAL MASTERPLAN LEGEND

Drawing Number: HE540039-CJV-EGN-SZZ_EN000000_Z-DR-ZZ-00001

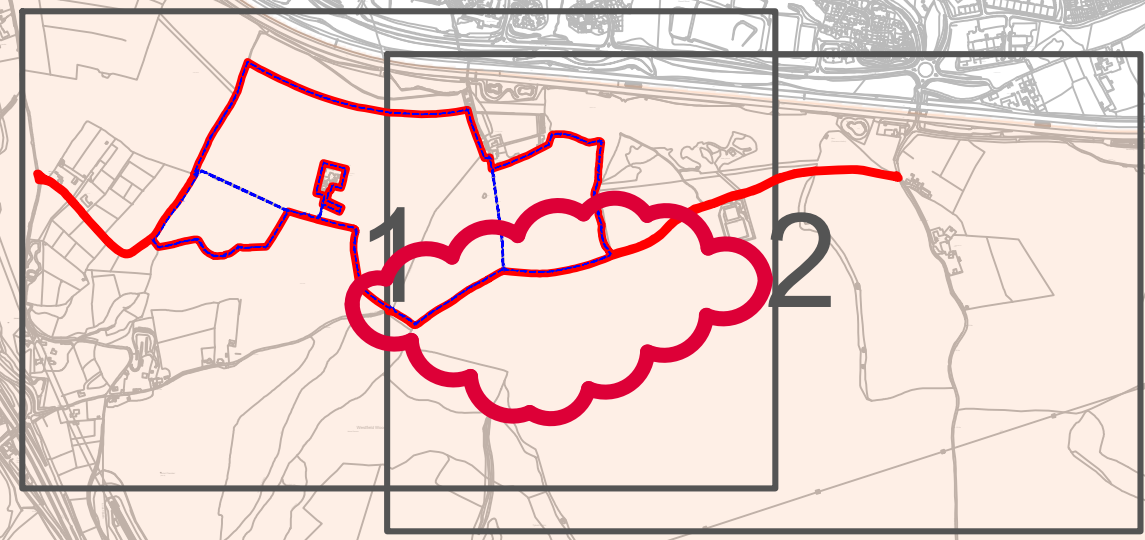
Original Size	A1	Revision	P01.6
Scale			

1.6 Section 1



SHEET NO LONGER IN USE
FOR ENVIRONMENTAL MASTERPLAN

3



SECTION 1A

SECTION 2

A289

Strood

SECTION 1A

M2

SECTION 1

Contains Ordnance Survey data: © Crown copyright and database rights 2022. Ordnance Survey 100030649

0 50 100 150 200 250 300 350 400 450 500
SCALE 1:5000 (A1)
SCALE 1:10000 (A3)
METRES

P01	S2	25/10/2022	DCO Application	SA	PS	MH
P02	S8	19/09/2023	Deadline 4	LD	RO	BF
Rev	Status	Rev. Date	Purpose of revision	Drawn	Chk'd	Apprv'd

Notes:
1. The sheets presented cover the full extent of the Order Limits. The sheet numbering for section 1 is not sequential due to alteration to the Order Limits prior to submissions resulting in page 7 being removed in the submission set

Section Layout Key:

1	Section S1 (Sheets 1 - 6)	1	Section S9 (Sheets 1 - 24)
1A	Section S1A (Sheets 1 - 2)	1	Section S10 (Sheets 1 - 21)
1	Section S2 (Sheets 1 - 21)	1	Section S11 (Sheets 1 - 22)
1	Section S3 (Sheets 1 - 10)	1	Section S12 (Sheets 1 - 24)
1	Section S4 (Sheets 1 - 4)	1	Section S13 (Sheets 1 - 14)
1	Section S5 to S8: Project in tunnel, therefore no Environmental Masterplan coverage	1	Section S14 (Sheets 1 - 18)

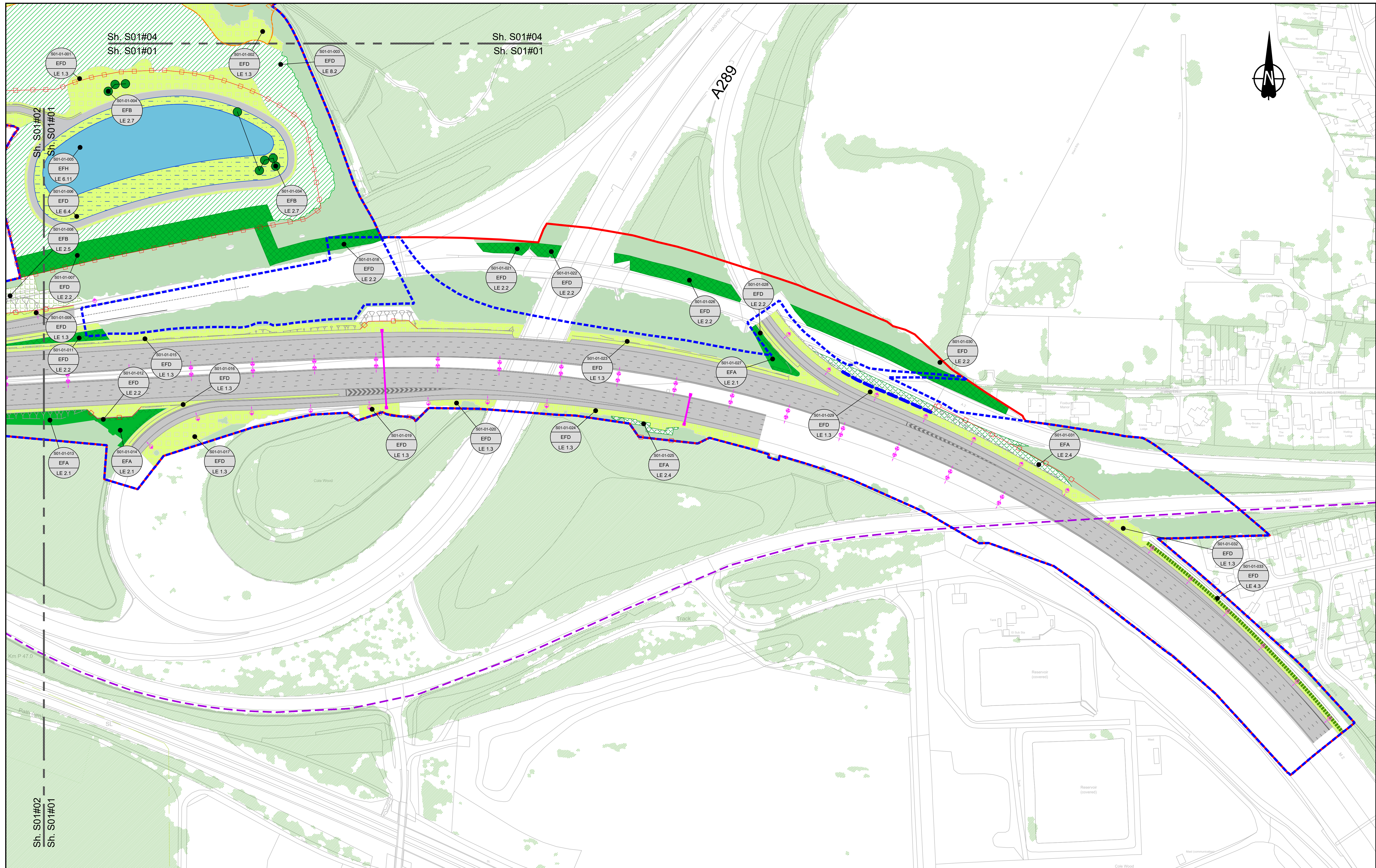
LEGEND

	Order Limits		Registered Parks and Gardens
	Permanent Acquisition of Land		Ramsar Sites
	Area of Outstanding Natural Beauty (AONB)		Ancient Woodland
	Site of Special Scientific Interest (SSSI)		Conservation Area

Client
national highways

Project
LOWER THAMES CROSSING

Status	DCO Examination	Original Size	A1	Revision	P02
Application Document Number	TR010032/APP/6.2	Scale	AS SHOWN		
Drawing title	ENVIRONMENTAL MASTERPLAN OVERVIEW PLAN SECTION 1 & 1A				
Drawing Number	HE540039-CJV-EGN-S01_EN000000_Z-DR-ZZ-50003				



Contains Ordnance Survey data. © Crown copyright and database rights 2022. Ordnance Survey 100030649

SCALE 1:1250 (A1)
SCALE 1:2500 (A3)

Section Overview Sheet: Refer to section overview plan at the start of the section.

P01	S2	25/10/2022	DCO Application	SA	PS	MH
P02	S9	19/07/2023	Deadline 2	LD	SK	BF
Rev	Status	Rev. Date	Purpose of revision	Drawn	Check'd	Apprv'd

Environmental Mitigation Legend: Refer to Main Legend for baseline and scheme features (Dwg: HE540039-CJV-EGN-SZZ_EN000000_Z-DR-ZZ-00001).

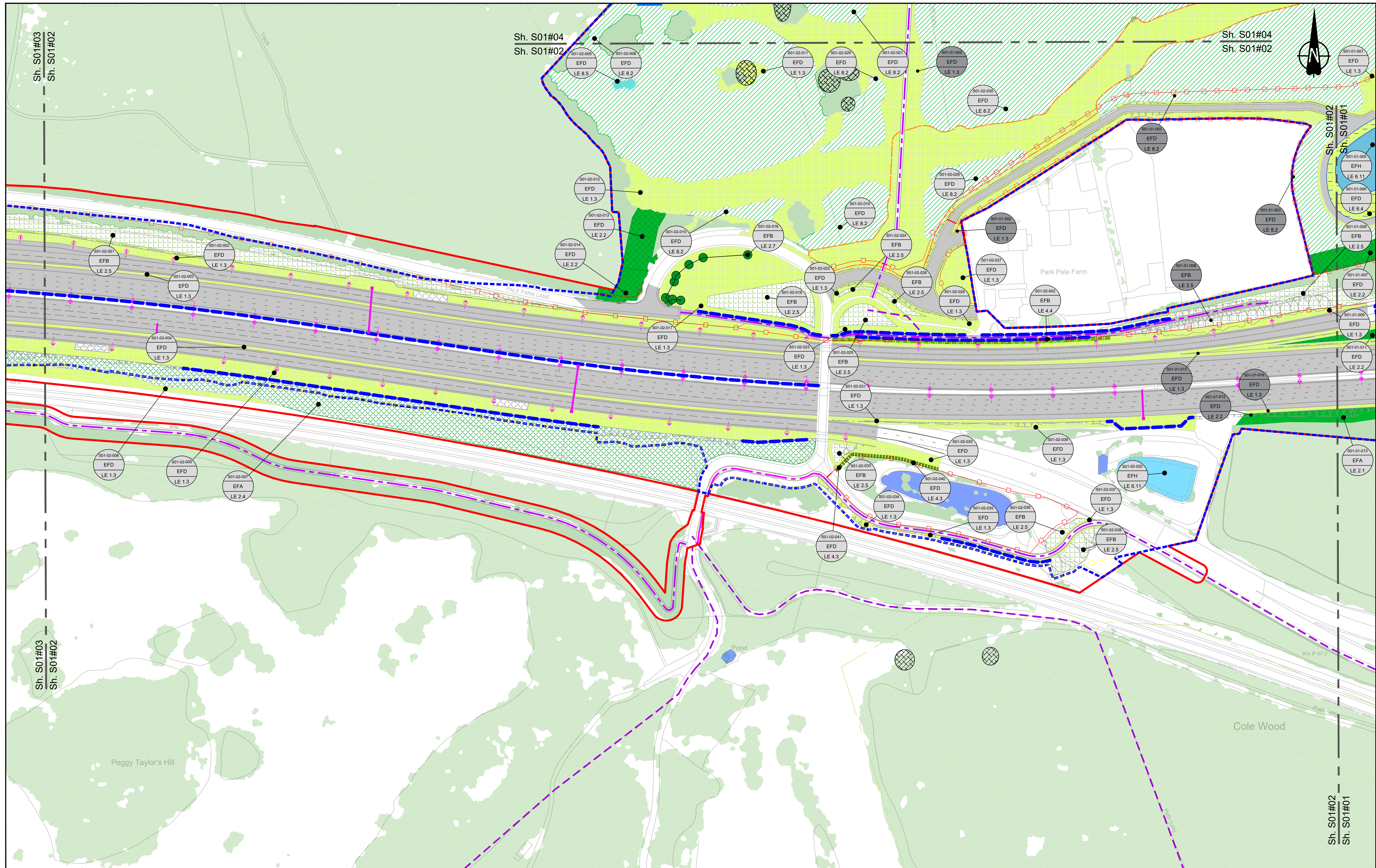
Order Limits — Order Limits — Permanent Acquisition of Land	Grassland (LE 1) LE 1.3 Species Rich Chalk Grassland LE 1.31 Species Rich Chalk Grassland LE 1.32 Species Rich Annual Wildflower Grassland LE 1.4 Rock and Scree	Planting (LE 2) LE 2.1 Woodland LE 2.11 Woodland With Non-Native Species LE 2.14 Wet / Carr Woodland LE 2.2 Woodland Edge LE 2.22 Scrub Woodland LE 2.4 Linear Belt of Shrubs and Trees	LE 2.5 Shrubs With Intermittent Trees LE 2.7 Scattered Trees LE 2.8 Scrub / Scattered Scrub Hedges (LE 4) LE 4.3 Native Species Hedge (untrimmed) LE 4.4 Native Hedgerow With Trees	Individual Trees (LE 5) LE 5.1 Individual Trees	Wetland Habitats (LE 6) LE 6.11 Water Bodies – Standing Water LE 6.12 Water Bodies and Associated Plants LE 6.2 Banks and Ditches LE 6.21 Banks and Ditches – High Tide Root Features	LE 6.4 Wet Grassland LE 6.41 Marsh and Wet Grassland – Coastal Grazing Marsh Hard Landscape Features (LE 7) LE 7.4 Reinforced Earth Bund Earthworks Proposed Contours	Ecological Habitats (LE 8) LE 8.1 Open Mosaic Habitat LE 8.2 Ancient Woodland Compensation Planting LE 8.3 Woodland Mitigation Planting LE 8.4 Wetland / Fenland Creation LE 8.5 Ecology Pond (indicative symbol only) LE 8.6 Acid Grassland Soil Salvage	Noise (E 1) E 1.2 Acoustic Barrier-Built Elements (typically inc. highway boundary fence)	Water (E 2) Flood Compensation Areas (E 2-FCA) Flood Defence (E 2-FD)	Ecological (E 3) E 3.2 Ecological Habitat Creation and Receptor sites for Protected Species E 3.2 Dormouse Boxes E 3.2 Bat Boxes E 3.2 Ecological Culvert E 3.2 Bat Barn Block	E 3.2 Barn Owl Box E 3.2 Ecological Fencing (inc. highway boundary fence)
--	---	--	---	---	--	--	--	---	--	--	--

Client: **national highways**

Project: **LOWER THAMES CROSSING**

Status	PINS Submission	Original Size	A1	Revision	P02
Application Document Number	TR010032/APP/6.2	Scale	1:1250		
Drawing Title	ENVIRONMENTAL MASTERPLAN SECTION 1 SHEET 1				
Drawing Number	HE540039-CJV-EGN-S01_EN000000_Z-DR-ZZ-00002				

HE540039-CJV-EGN-S01_EN000000_Z-DR-ZZ-00002.dwg



Contains Ordnance Survey data. © Crown copyright and database rights 2022. Ordnance Survey 100039649

SCALE 1:1250 (A1)
SCALE 1:2500 (A3)

Section Overview Sheet: Refer to section overview plan at the start of the section.

P01	S2	25/10/2022	DCO Application	SA	PS	MH
P02	S9	19/07/2023	Deadline 2	LD	SK	BF
Rev	Status	Rev. Date	Purpose of revision	Drawn	Check'd	Apprv'd

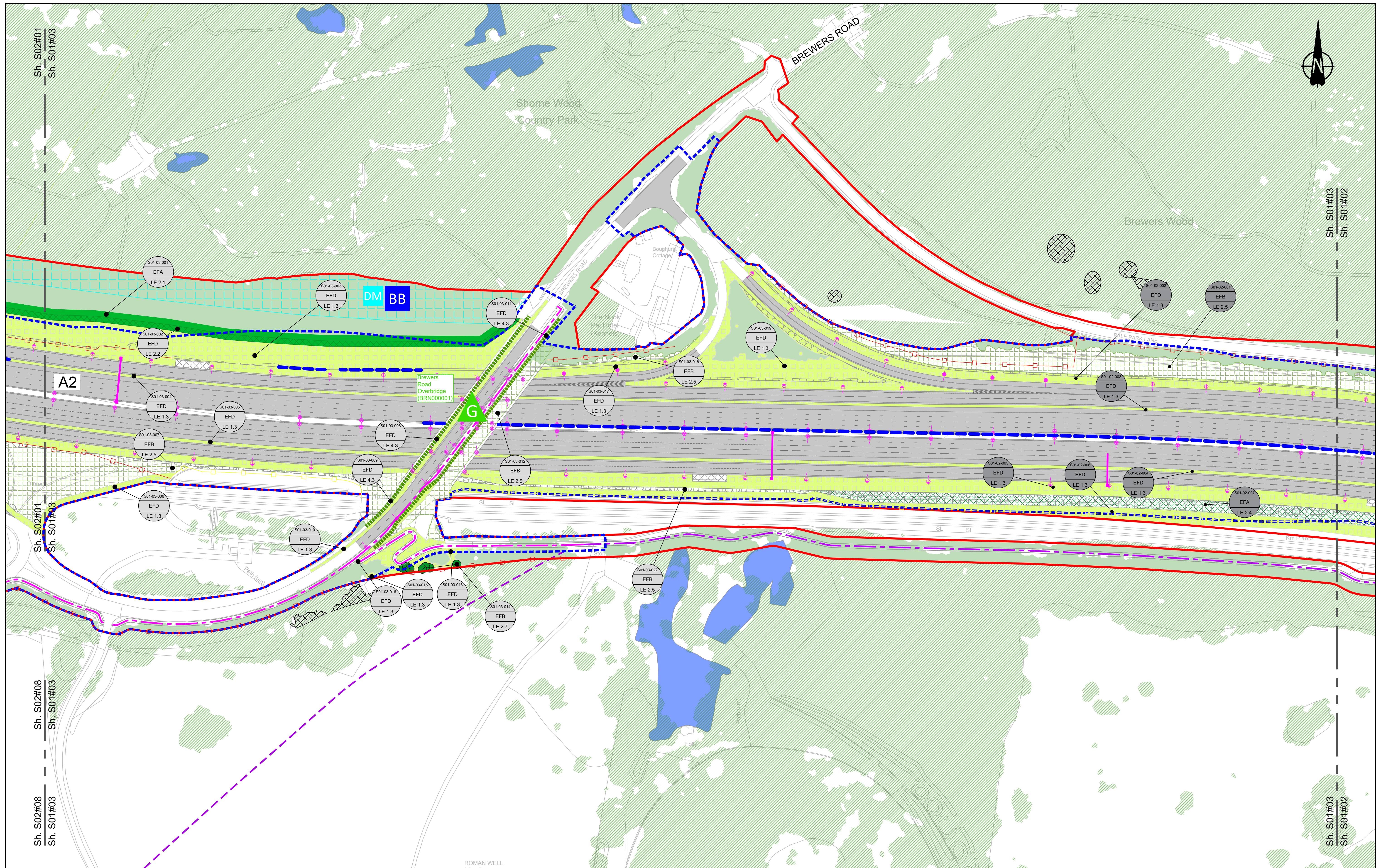
Environmental Mitigation Legend: Refer to Main Legend for baseline and scheme features (Dwg: HE540039-CJV-EGN-SZZ_EN000000_Z-DR-ZZ-00001).

Order Limits	Planting (LE 2)	Individual Trees (LE 5)	Ecological Habitats (LE 8)	Noise (E 1)	Ecological (E 3)
Order Limits	LE 2.1 Woodland	LE 5.1 Individual Trees	LE 8.1 Open Mosaic Habitat	LE 8.7 Nitrogen Deposition (NDEP) Compensation Area	E 3.2 Ecological Habitat Creation and Receptor sites for Protected Species
Permanent Acquisition of Land	LE 2.11 Woodland With Non-Native Species	LE 5.2 Scattered Trees	LE 8.2 Ancient Woodland Compensation Planting	E 1.2 Acoustic Barrier-Built Elements (Typically inc. Highway boundary fence)	E 3.2 Dormouse Boxes
Grassland (LE 1)	LE 2.14 Wet / Carr Woodland	Wetland Habitats (LE 6)	LE 8.3 Woodland Mitigation Planting	Water (E 2)	E 3.2 Bat Boxes
LE 1.3 Species Rich Grassland	LE 2.2 Woodland Edge	LE 6.11 Water Bodies - Standing Water	LE 8.4 Wetland / Fenland Creation	Flood Compensation Areas (E 2-FCA)	E 3.2 Ecological Culvert
LE 1.31 Species Rich Chalk Grassland	LE 2.22 Scrub Woodland	LE 6.12 Water Bodies and Associated Plants - Shallow Scrape	LE 8.5 Ecology Pond (Indicative symbol only)	Flood Defence (E 2-FD)	E 3.2 Bat Barn Block
LE 1.32 Species Rich Annual Wildflower Grassland	LE 2.4 Linear Belt of Shrubs and Trees	LE 6.2 Banks and Ditches	Hard Landscape Features (LE 7)		
LE 1.4 Rock and Scree		LE 6.21 Banks and Ditches - High Tide Roost Features	LE 7.4 Reinforced Earth Bund		
			Earthworks		
			Proposed Contours		

Client: **national highways**

Project: **LOWER THAMES CROSSING**

Status: PINS Submission	Original Size: A1	Revision: P02
Application Document Number: TR010032/APP/6.2	Scale: 1:1250	
Drawing Title: ENVIRONMENTAL MASTERPLAN SECTION 1 SHEET 2		
Drawing Number: HE540039-CJV-EGN-S01_EN000000_Z-DR-ZZ-00003		



Contains Ordnance Survey data. © Crown copyright and database rights 2022. Ordnance Survey 100030649

0 10 20 30 40 50 60 70 80 90 100 METRES

SCALE 1:1250 (A1)
SCALE 1:2500 (A3)

Section Overview Sheet: Refer to section overview plan at the start of the section.

P01	S2	25/10/2022	DCO Application	SA	PS	MH
P02	S9	19/07/2023	Deadline 2	LD	SK	BF
Rev	Status	Rev. Date	Purpose of revision	Drawn	Check'd	Apprv'd

Environmental Mitigation Legend: Refer to Main Legend for baseline and scheme features (Dwg: HE540039-CJV-EGN-SZZ_EN000000_Z-DR-ZZ-00001).

Order Limits	Planting (LE 2)	Individual Trees (LE 5)	Ecological Habitats (LE 8)	Noise (E 1)	Ecological (E 3)
Order Limits	LE 2.1 Woodland	LE 5.1 Individual Trees	LE 8.1 Open Mosaic Habitat	LE 1.2 Nitrogen Deposition (NDEP) Compensation Area	E 3.2 Ecological Habitat Creation and Receptor sites for Protected Species
Permanent Acquisition of Land	LE 2.11 Woodland With Non-Native Species	LE 5.2 Scattered Trees	LE 8.2 Ancient Woodland Compensation Planting	E 1.2 Acoustic Barrier-Built Elements (typically inc. highway boundary fence)	E 3.2 Ecological Fencing (inc. highway boundary fence)
Grassland (LE 1)	LE 2.14 Wet / Carr Woodland	Wetland Habitats (LE 6)	LE 8.3 Wetland Mitigation Planting	Water (E 2)	E 3.2 Ecological Culvert
LE 1.3 Species Rich Grassland	LE 2.2 Woodland Edge	LE 6.1 Water Bodies - Standing Water	LE 8.4 Wetland / Fenland Creation	Flood Compensation Areas (E 2-FCA)	E 3.2 Bat Block
LE 1.31 Species Rich Chalk Grassland	LE 2.22 Scrub Woodland	LE 6.2 Water Bodies and Associated Plants - Shallow Scrape	LE 8.5 Ecology Pond (indicative symbol only)	Flood Defence (E 2-FD)	E 3.2 Bat Barn Block
LE 1.32 Species Rich Annual Wildflower Grassland	LE 2.4 Linear Belt of Shrubs and Trees	LE 6.2.1 Banks and Ditches	LE 8.6 Acid Grassland Soil Salvage		
LE 1.4 Rock and Scree		LE 6.2.2 Banks and Ditches - High Tide Roost Features			
		Hedges (LE 4)			
		LE 4.3 Native Species Hedge (untrimmed)			
		LE 4.4 Native Hedgerow With Trees			
		Hard Landscape Features (LE 7)			
		LE 7.4 Reinforced Earth Bund			
		Earthworks			
		Proposed Contours			

Client: national highways

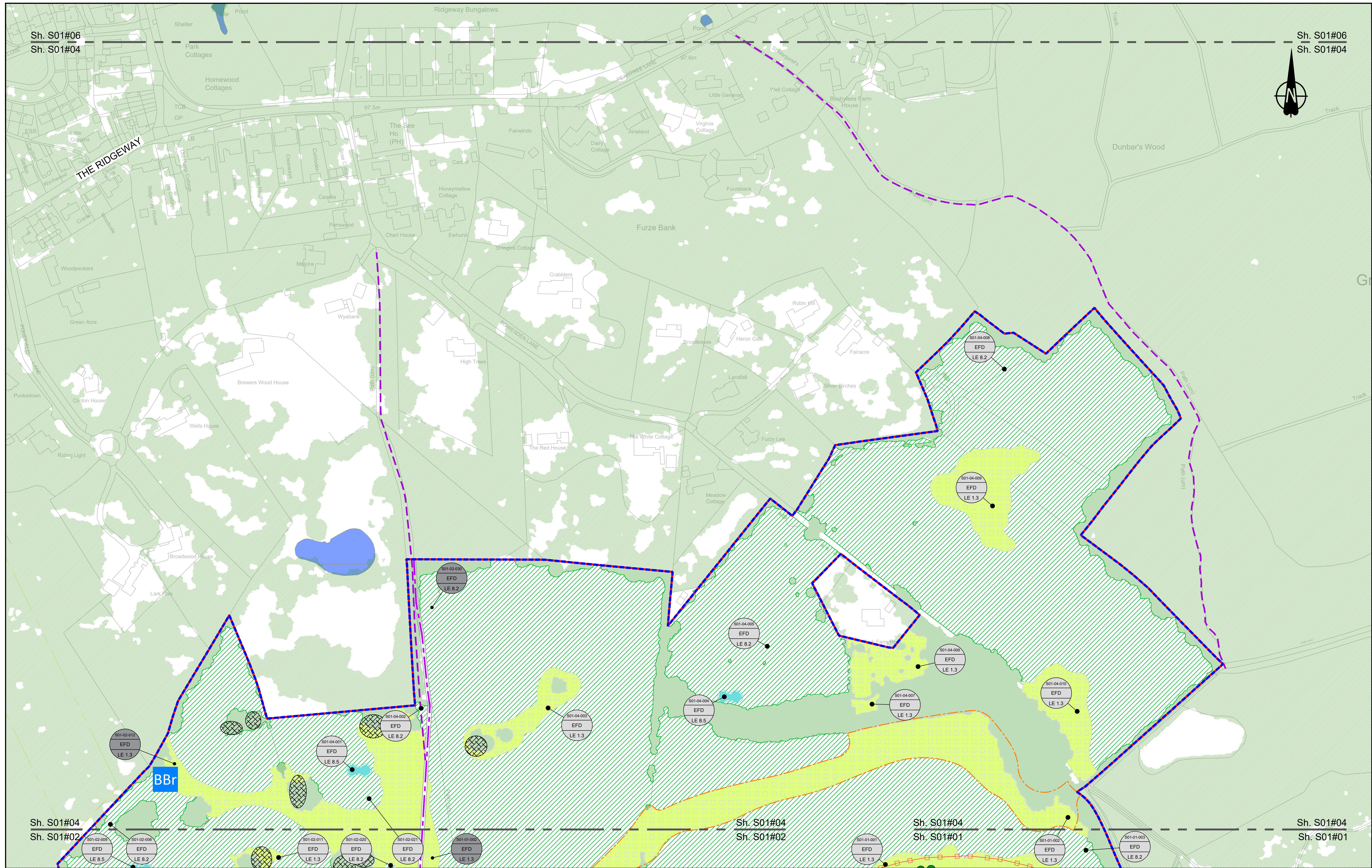
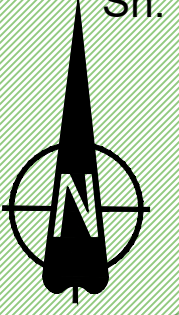
Project: LOWER THAMES CROSSING

Status	PINS Submission	Original Size	A1	Revision	P02
Application Document Number	TR010032/APP/6.2	Scale	1:1250		
Drawing Title	ENVIRONMENTAL MASTERPLAN SECTION 1 SHEET 3				
Drawing Number	HE540039-CJV-EGN-S01_EN000000_Z-DR-ZZ-00004				

HE540039-CJV-EGN-S01_EN000000_Z-DR-ZZ-00004.dwg

Sh. S01#06
Sh. S01#04

Sh. S01#06
Sh. S01#04



Sh. S01#04
Sh. S01#02

Sh. S01#04
Sh. S01#02

Sh. S01#04
Sh. S01#01

Sh. S01#04
Sh. S01#01

Contains Ordnance Survey data. © Crown copyright and database rights 2022. Ordnance Survey 100039649

SCALE 1:1250 (A1)
SCALE 1:2500 (A3)

Section Overview Sheet: Refer to section overview plan at the start of the section.

P01.6 50 08/08/2022 LD

Rev	Status	Rev. Date	Purpose of revision	Drawn	Check'd	Apprv'd

Environmental Mitigation Legend: Refer to Main Legend for baseline and scheme features (Dwg: HE540039-CJV-EGN-SZZ_EN000000_Z-DR-ZZ-00001).

Order Limits
 - Permanent Acquisition of Land

Grassland (LE 1)
 - LE 1.3 Species Rich Grassland
 - LE 1.31 Species Rich Chalk Grassland
 - LE 1.32 Species Rich Annual Wildflower Grassland
 - LE 1.4 Rock and Scree

Planting (LE 2)
 - LE 2.1 Woodland
 - LE 2.11 Woodland With Non-Native Species
 - LE 2.14 Wet / Carr Woodland
 - LE 2.2 Woodland Edge
 - LE 2.22 Scrub Woodland
 - LE 2.4 Linear Belt of Shrubs and Trees

Shrubs With Intermittent Trees (LE 2.5)
 - LE 2.7 Scattered Trees

Wetland Habitats (LE 6)
 - LE 6.11 Water Bodies - Standing Water
 - LE 6.12 Water Bodies and Associated Plants - Shallow Scrape
 - LE 6.2 Banks and Ditches
 - LE 6.21 Banks and Ditches - High Tide Root Features

Hedges (LE 4)
 - LE 4.3 Native Species Hedge (untrimmed)
 - LE 4.4 Native Hedgerow With Trees

Individual Trees (LE 5)
 - LE 5.1 Individual Trees

Wetland Habitats (LE 6)
 - LE 6.4 Marsh and Wet Grassland - Coastal Grazing Marsh
 - LE 7.4 Reinforced Earth Bund

Hard Landscape Features (LE 7)
 - LE 7.4 Reinforced Earth Bund

Earthworks
 - Proposed Contours

Ecological Habitats (LE 8)
 - LE 8.1 Open Mosaic Habitat
 - LE 8.2 Ancient Woodland Compensation Planting
 - LE 8.3 Woodland Mitigation Planting
 - LE 8.4 Wetland / Fenland Creation
 - LE 8.5 Ecology Pond (indicative symbol only)
 - LE 8.6 Acid Grassland Soil Salvage

Ecological (E 3)
 - E 3.2 Ecological Habitat Creation and Receptor sites for Protected Species
 - E 3.2 Dormouse Boxes
 - E 3.2 Bat Boxes
 - E 3.2 Ecological Culvert
 - E 3.2 Bat Barn Block
 - E 3.2 Barn Owl Box
 - E 3.2 Ecological Fencing (inc. highway boundary fence)

Noise (E 1)
 - E 1.2 Acoustic Barrier-Built Elements (typically inc. highway boundary fence)

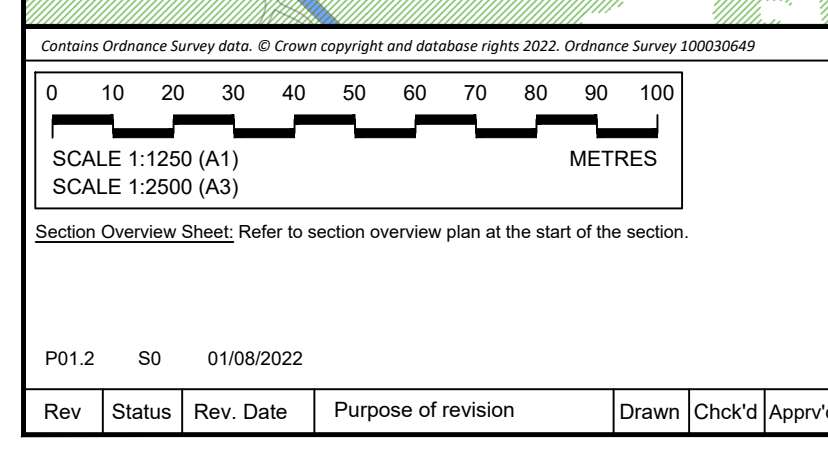
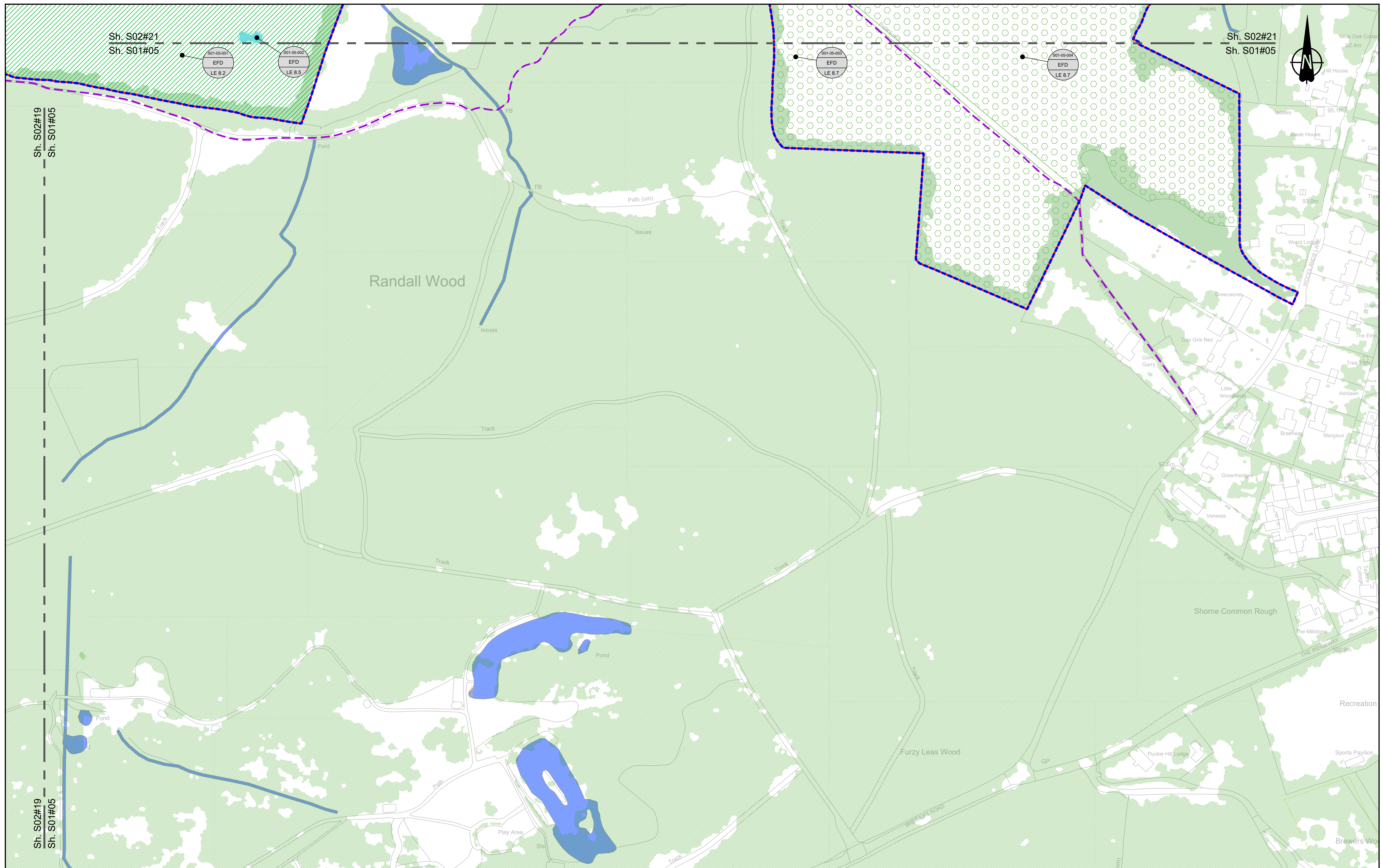
Water (E 2)
 - Flood Compensation Areas (E 2-FCA)
 - Flood Defence (E 2-FD)

Client: national highways

Project: LOWER THAMES CROSSING

Status: Initial Status or WIP
 Application Document Number: TR010032/APP/6.2
 Drawing Title: ENVIRONMENTAL MASTERPLAN SECTION 1 SHEET 4
 Drawing Number: HE540039-CJV-EGN-S01_EN000000_Z-DR-ZZ-00005
 Original Size: A1
 Revision: P01.6
 Scale: 1:1250

HE540039-CJV-EGN-S01_EN000000_Z-DR-ZZ-00005.dwg



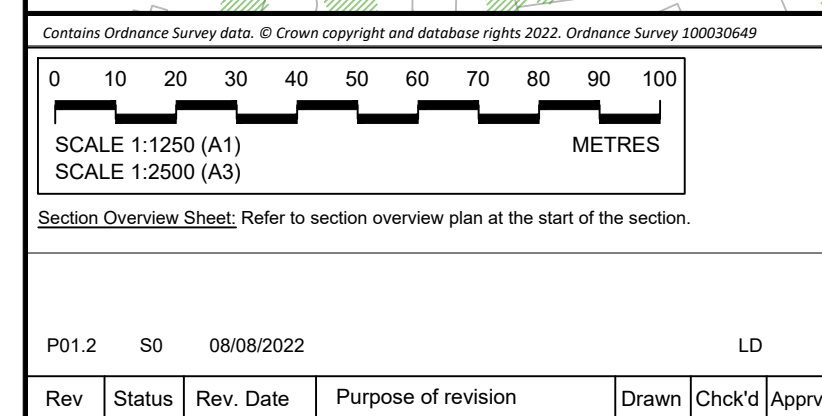
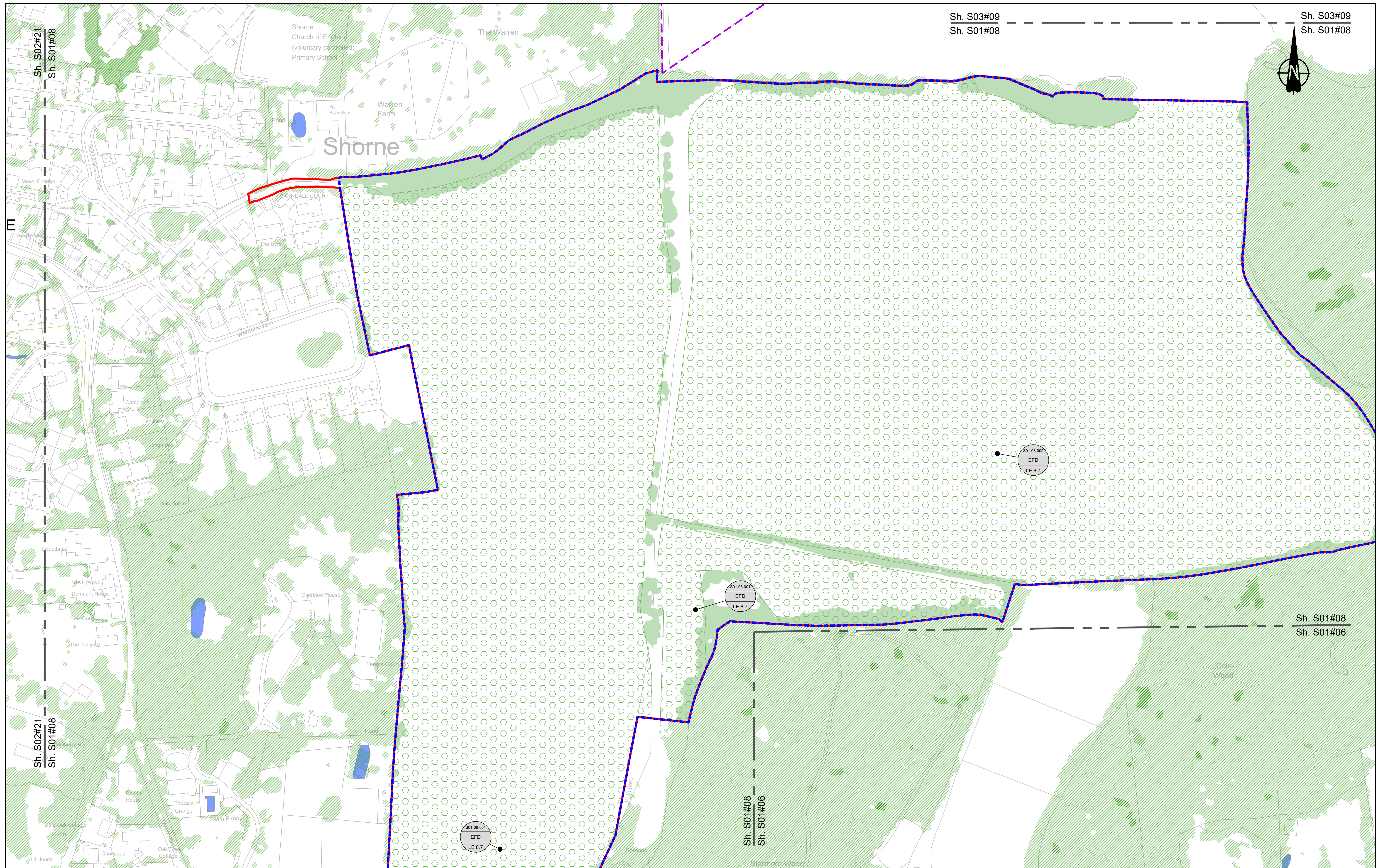
Environmental Mitigation Legend: Refer to Main Legend for baseline and scheme features (Dwg: HE540039-CJV-EGN-SZZ_EN000000_Z-DR-ZZ-00001).

<p>Order Limits</p> <ul style="list-style-type: none"> Order Limits Permanent Acquisition of Land <p>Grassland (LE 1)</p> <ul style="list-style-type: none"> LE 1.3 Species Rich Grassland LE 1.31 Species Rich Chalk Grassland LE 1.32 Species Rich Annual Wildflower Grassland LE 1.4 Rock and Scree 	<p>Planting (LE 2)</p> <ul style="list-style-type: none"> LE 2.1 Woodland LE 2.11 Woodland With Non-Native Species LE 2.14 Wet / Carr Woodland LE 2.2 Woodland Edge LE 2.22 Scrub Woodland LE 2.4 Linear Belt of Shrubs and Trees <p>Hedges (LE 4)</p> <ul style="list-style-type: none"> LE 4.3 Native Species Hedge (untrimmed) LE 4.4 Native Hedgerow With Trees 	<p>Individual Trees (LE 5)</p> <ul style="list-style-type: none"> LE 5.1 Individual Trees <p>Wetland Habitats (LE 6)</p> <ul style="list-style-type: none"> LE 6.11 Water Bodies - Standing Water LE 6.12 Water Bodies and Associated Plants - Shallow Scrape LE 6.2 Banks and Ditches LE 6.21 Banks and Ditches - High Tide Root Features <p>Hard Landscape Features (LE 7)</p> <ul style="list-style-type: none"> LE 7.4 Reinforced Earth Bund <p>Earthworks</p> <ul style="list-style-type: none"> Proposed Contours 	<p>Ecological Habitats (LE 8)</p> <ul style="list-style-type: none"> LE 8.1 Open Mosaic Habitat LE 8.2 Ancient Woodland LE 8.3 Woodland Mitigation Planting LE 8.4 Wetland / Fenland Creation LE 8.5 Ecology Pond (indicative symbol only) LE 8.6 Acid Grassland Soil Salvage <p>Ecological (E 3)</p> <ul style="list-style-type: none"> E 3.2 Ecological Habitat Creation and Receptor sites for Protected Species E 3.2 Dormouse Boxes E 3.2 Bat Boxes E 3.2 Ecological Culvert E 3.2 Bat Barn Block E 3.2 Ecological Fencing (inc. highway boundary fence) E 3.2 Barn Owl Box 	<p>Noise (E 1)</p> <ul style="list-style-type: none"> E 1.2 Acoustic Barrier-Built Elements (typically inc. highway boundary fence) <p>Water (E 2)</p> <ul style="list-style-type: none"> Flood Compensation Areas (E 2-FCA) Flood Defence (E 2-FD) LE 8.7 Nitrogen Deposition (NDEP) Compensation Area
--	---	--	---	---

Client: national highways

Project: LOWER THAMES CROSSING

Status: Initial Status or WIP	Original Size: A1	Revision: P01.2
Application Document Number: TR010032/APP/6.2	Scale: 1:1250	
Drawing title: ENVIRONMENTAL MASTERPLAN SECTION 1 SHEET 5		
Drawing Number: HE540039-CJV-EGN-S01_EN000000_Z-DR-ZZ-00006		



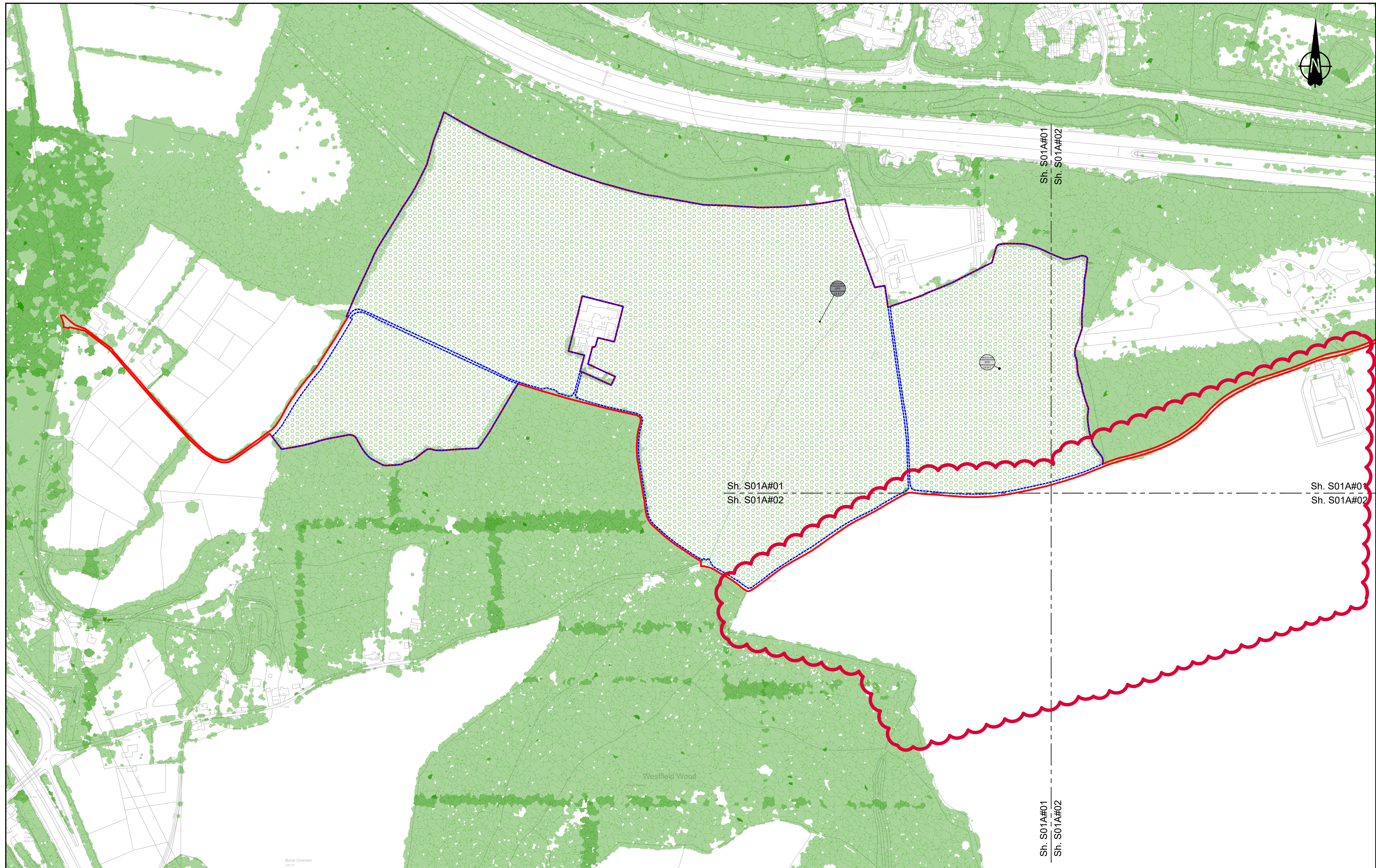
Environmental Mitigation Legend: Refer to Main Legend for baseline and scheme features (Dwg: HE540039-CJV-EGN-SZZ_EN000000_Z-DR-ZZ-00001).	
<ul style="list-style-type: none"> Order Limits Permanent Acquisition of Land Grassland (LE 1) <ul style="list-style-type: none"> LE 1.3 Species Rich Grassland LE 1.31 Species Rich Chalk Grassland LE 1.32 Species Rich Annual Wildflower Grassland LE 1.4 Rock and Scree 	<ul style="list-style-type: none"> Planting (LE 2) <ul style="list-style-type: none"> LE 2.1 Woodland LE 2.11 Woodland With Non-Native Species LE 2.14 Wet / Carr Woodland LE 2.2 Woodland Edge LE 2.22 Scrub Woodland LE 2.4 Linear Belt of Shrubs and Trees LE 2.5 Shrubs With Intermittent Trees LE 2.7 Scattered Trees LE 2.8 Scrub / Scattered Scrub Hedges (LE 4) <ul style="list-style-type: none"> LE 4.3 Native Species Hedge (untrimmed) LE 4.4 Native Hedgerow With Trees
<ul style="list-style-type: none"> Individual Trees (LE 5) <ul style="list-style-type: none"> LE 5.1 Individual Trees Wetland Habitats (LE 6) <ul style="list-style-type: none"> LE 6.11 Water Bodies - Standing Water LE 6.12 Water Bodies and Associated Plants - Shallow Scrape LE 6.2 Banks and Ditches LE 6.21 Banks and Ditches - High Tide Root Features LE 6.4 Wet Grassland LE 6.41 Marsh and Wet Grassland - Coastal Grazing Marsh LE 7.4 Reinforced Earth Bund Earthworks <ul style="list-style-type: none"> Proposed Contours 	<ul style="list-style-type: none"> Ecological Habitats (LE 8) <ul style="list-style-type: none"> LE 8.1 Open Mosaic Habitat LE 8.2 Ancient Woodland Compensation Planting LE 8.3 Woodland Mitigation Planting LE 8.4 Wetland / Fenland Creation LE 8.5 Ecology Pond (indicative symbol only) LE 8.6 Acid Grassland Soil Salvage LE 8.7 Nitrogen Deposition (NDEP) Compensation Area Noise (E 1) <ul style="list-style-type: none"> E 1.2 Acoustic Barrier-Built Elements (typically inc. highway boundary fence) Water (E 2) <ul style="list-style-type: none"> Flood Compensation Areas (E 2-FCA) Flood Defence (E 2-FD) Ecological (E 3) <ul style="list-style-type: none"> E 3.2 Ecological Habitat Creation and Receptor sites for Protected Species E 3.2 Dormouse Boxes E 3.2 Bat Boxes E 3.2 Ecological Culvert E 3.2 Bat Barn Block E 3.2 Ecological Fencing (inc. highway boundary fence) E 3.2 Barn Owl Box

Client: national highways

Project: LOWER THAMES CROSSING

Status: Initial Status or WIP	Original Size: A1	Revision: P01.2
Application Document Number: TR010032/APP/6.2	Scale: 1:1250	
Drawing Title: ENVIRONMENTAL MASTERPLAN SECTION 1 SHEET 8		
Drawing Number: HE540039-CJV-EGN-S01_EN000000_Z-DR-ZZ-00009		

1.7 Section 1A



Contains Ordnance Survey data. © Crown copyright and database rights 2022. Ordnance Survey 100030649

0	50	100	150	200		
SCALE 1:2500 (A1)						
SCALE 1:5000 (A3)						
P01	S2	25/10/2022	DCO Application	SA	PS	MH
P02	S8	19/09/2023	Deadline 4	GH	RO	BF
Rev	Status	Rev. Date	Purpose of revision	Drawn	Check'd	Apprv'd

Environmental Mitigation Legend: Refer to Main Legend for baseline and scheme features (Dwg: HE540039-CJV-EGN-SZZ_EN000000_Z-DR-ZZ-00001).

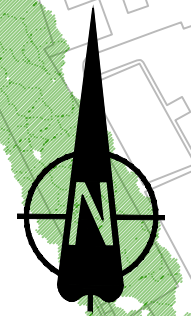
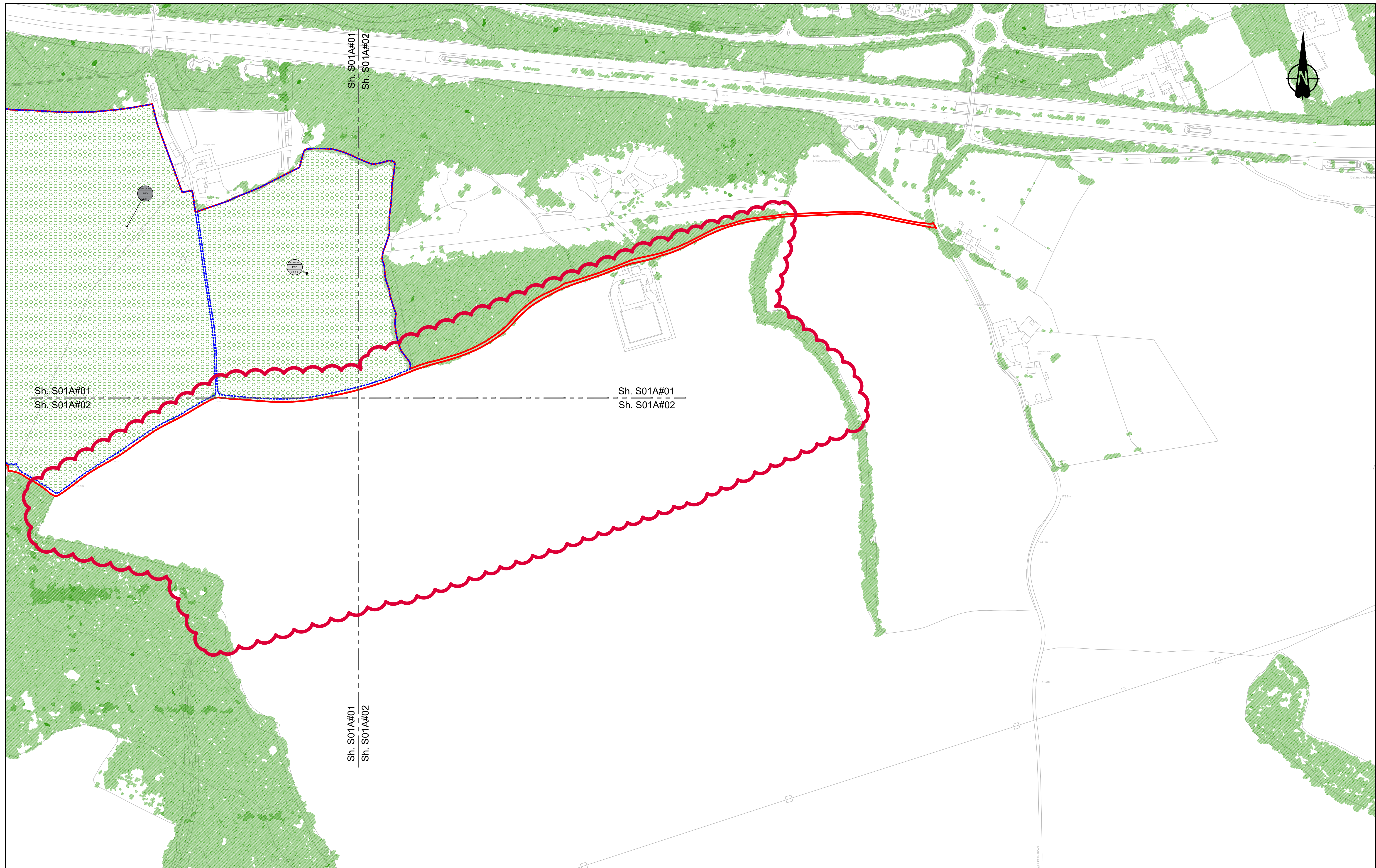
<p>Order Limits</p> <ul style="list-style-type: none"> Order Limits Permanent Acquisition of Land <p>Grassland (LE 1)</p> <ul style="list-style-type: none"> LE 1.3 Species Rich Grassland LE 1.31 Species Rich Chalk Grassland LE 1.32 Species Rich Annual Wildflower Grassland LE 1.4 Rock and Scree 	<p>Planting (LE 2)</p> <ul style="list-style-type: none"> LE 2.1 Woodland LE 2.11 Woodland With Non-Native Species LE 2.14 Wet / Carr Woodland LE 2.2 Woodland Edge LE 2.22 Scrub Woodland LE 2.4 Linear Belt of Shrubs and Trees <p>Hedges (LE 4)</p> <ul style="list-style-type: none"> LE 4.3 Native Species Hedge (untrimmed) LE 4.4 Native Hedgerow With Trees 	<p>Individual Trees (LE 5)</p> <ul style="list-style-type: none"> LE 5.1 Individual Trees <p>Wetland Habitats (LE 6)</p> <ul style="list-style-type: none"> LE 6.11 Water Bodies - Standing Water LE 6.12 Water Bodies and Associated Plants - Shallow Scrape LE 6.2 Banks and Ditches LE 6.21 Banks and Ditches - High Tide Roost Features <p>Hard Landscape Features (LE 7)</p> <ul style="list-style-type: none"> LE 7.4 Reinforced Earth Bund <p>Earthworks</p> <ul style="list-style-type: none"> Proposed Contours 	<p>Ecological Habitats (LE 8)</p> <ul style="list-style-type: none"> LE 8.1 Open Mosaic Habitat LE 8.2 Ancient Woodland Compensation Planting LE 8.3 Woodland Mitigation Planting LE 8.4 Wetland / Fenland Creation LE 8.5 Ecology Pond (indicative symbol only) LE 8.6 Acid Grassland Soil Salvage 	<p>LE 6.4 Marsh and Wet Grassland - Coastal Grazing Marsh</p> <p>LE 7.4 Reinforced Earth Bund</p> <p>LE 8.4 Wetland / Fenland Creation</p> <p>LE 8.5 Ecology Pond (indicative symbol only)</p> <p>LE 8.6 Acid Grassland Soil Salvage</p>	<p>Ecological (E 3)</p> <ul style="list-style-type: none"> E 3.2 Ecological Habitat Creation and Receptor sites for Protected Species E 3.2 Dormouse Boxes E 3.2 Bat Boxes E 3.2 Ecological Culvert E 3.2 Bat Barn Block E 3.2 Barn Owl Box E 3.2 Ecological Fencing (inc. highway boundary fence) 	<p>Noise (E 1)</p> <ul style="list-style-type: none"> E 1.2 Acoustic Barrier-Built Elements (typically inc. highway boundary fence) <p>Water (E 2)</p> <ul style="list-style-type: none"> Flood Compensation Areas (E 2-FCA) Flood Defence (E 2-FD)
--	---	---	--	---	--	--

Client: national highways

Project: LOWER THAMES CROSSING

Status	DCO Examination	Original Size	A1	Revision	P02
Application Document Number	TR010032/APP/6.2	Scale	1:2500		
Drawing Title	ENVIRONMENTAL MASTERPLAN SECTION 1A SHEET 1				
Drawing Number	HE540039-CJV-EGN-S01_EN000000_Z-DR-ZZ-50000				

HE540039-CJV-EGN-S01_EN000000_Z-DR-ZZ-50000.dwg



Contains Ordnance Survey data. © Crown copyright and database rights 2022. Ordnance Survey 100039649

0 50 100 150 200
SCALE 1:2500 (A1)
SCALE 1:5000 (A3)
METRES

P01	S2	25/10/2022	DCO Application	SA	PS	MH
P02	S8	19/09/2023	Deadline 4	GH	RO	BF
Rev	Status	Rev. Date	Purpose of revision	Drawn	Check'd	Apprv'd

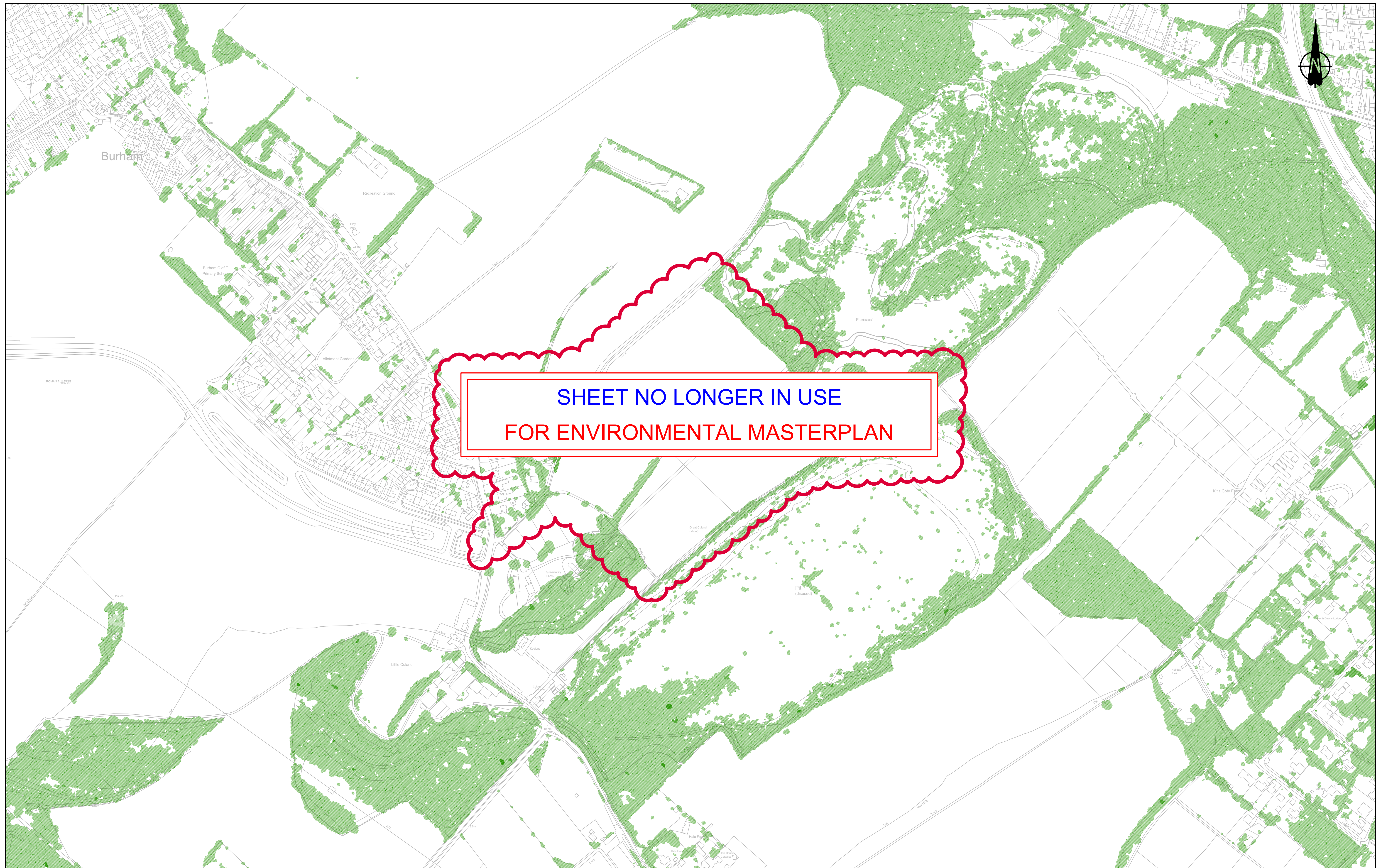
Environmental Mitigation Legend: Refer to Main Legend for baseline and scheme features (Dwg: HE540039-CJV-EGN-SZZ_EN000000_Z-DR-ZZ-00001).

<p>Order Limits</p> <ul style="list-style-type: none"> Order Limits Permanent Acquisition of Land <p>Grassland (LE 1)</p> <ul style="list-style-type: none"> LE 1.3 Species Rich Grassland LE 1.31 Species Rich Chalk Grassland LE 1.32 Species Rich Annual Wildflower Grassland LE 1.4 Rock and Scree 	<p>Planting (LE 2)</p> <ul style="list-style-type: none"> LE 2.1 Woodland LE 2.11 Woodland With Non-Native Species LE 2.14 Wet / Carr Woodland LE 2.2 Woodland Edge LE 2.22 Scrub Woodland LE 2.4 Linear Belt of Shrubs and Trees <p>Hedges (LE 4)</p> <ul style="list-style-type: none"> LE 4.3 Native Species Hedge (untrimmied) LE 4.4 Native Hedgerow With Trees 	<p>Individual Trees (LE 5)</p> <ul style="list-style-type: none"> LE 5.1 Individual Trees <p>Wetland Habitats (LE 6)</p> <ul style="list-style-type: none"> LE 6.11 Water Bodies - Standing Water LE 6.12 Water Bodies and Associated Plants - Shallow Scrape LE 6.2 Banks and Ditches LE 6.21 Banks and Ditches - High Tide Root Features <p>Hard Landscape Features (LE 7)</p> <ul style="list-style-type: none"> LE 7.4 Reinforced Earth Bund <p>Earthworks</p> <ul style="list-style-type: none"> Proposed Contours 	<p>Ecological Habitats (LE 8)</p> <ul style="list-style-type: none"> LE 8.1 Open Mosaic Habitat LE 8.2 Ancient Woodland Compensation Planting LE 8.3 Woodland Mitigation Planting LE 8.4 Wetland / Fenland Creation LE 8.5 Ecology Pond (indicative symbol only) LE 8.6 Acid Grassland Soil Salvage 	<p>Noise (E 1)</p> <ul style="list-style-type: none"> LE 8.7 Nitrogen Deposition (NDEP) Compensation Area E 1.2 Acoustic Barrier-Built Elements (typically inc. highway boundary fence) <p>Water (E 2)</p> <ul style="list-style-type: none"> Flood Compensation Areas (E 2-FCA) Flood Defence (E 2-FD) 	<p>Ecological (E 3)</p> <ul style="list-style-type: none"> E 3.2 Ecological Habitat Creation and Receptor sites for Protected Species E 3.2 Dormouse Boxes E 3.2 Bat Boxes E 3.2 Ecological Culvert E 3.2 Bat Barn Block 	<ul style="list-style-type: none"> E 3.2 Barn Owl Box E 3.2 Ecological Fencing (inc. highway boundary fence)
--	--	--	--	---	--	--

Client: national highways

Project: LOWER THAMES CROSSING

Status	DCO Examination	Original Size	A1	Revision	P02
Application Document Number	TR010032/APP/6.2	Scale	1:2500		
Drawing title	ENVIRONMENTAL MASTERPLAN SECTION 1A SHEET 2				
Drawing Number	HE540039-CJV-EGN-S01_EN000000_Z-DR-ZZ-50001				



**SHEET NO LONGER IN USE
FOR ENVIRONMENTAL MASTERPLAN**

Contains Ordnance Survey data. © Crown copyright and database rights 2022. Ordnance Survey 100039649

0 50 100 150 200
SCALE 1:2500 (A1)
SCALE 1:5000 (A3)
METRES

P01	S2	25/10/2022	DCO Application	SA	PS	MH
P02	S8	19/09/2023	Deadline 4	GH	RO	BF
Rev	Status	Rev. Date	Purpose of revision	Drawn	Chck'd	Apprv'd

Environmental Mitigation Legend: Refer to Main Legend for baseline and scheme features (Dwg: HE540039-CJV-EGN-SZZ_EN000000_Z-DR-ZZ-00001).

<p>Order Limits</p> <ul style="list-style-type: none"> Order Limits Permanent Acquisition of Land <p>Grassland (LE 1)</p> <ul style="list-style-type: none"> LE 1.3 Species Rich Grassland LE 1.31 Species Rich Chalk Grassland LE 1.32 Species Rich Annual Wildflower Grassland LE 1.4 Rock and Scree 	<p>Planting (LE 2)</p> <ul style="list-style-type: none"> LE 2.1 Woodland LE 2.11 Woodland With Non-Native Species LE 2.14 Wet / Carr Woodland LE 2.2 Woodland Edge LE 2.22 Scrub Woodland LE 2.4 Linear Belt of Shrubs and Trees <p>Hedges (LE 4)</p> <ul style="list-style-type: none"> LE 4.3 Native Species Hedge (untrimmied) LE 4.4 Native Hedgerow With Trees 	<p>Individual Trees (LE 5)</p> <ul style="list-style-type: none"> LE 5.1 Individual Trees <p>Wetland Habitats (LE 6)</p> <ul style="list-style-type: none"> LE 6.11 Water Bodies - Standing Water LE 6.12 Water Bodies and Associated Plants - Shallow Scrape LE 6.2 Banks and Ditches LE 6.21 Banks and Ditches - High Tide Roost Features 	<p>Ecological Habitats (LE 8)</p> <ul style="list-style-type: none"> LE 8.1 Open Mosaic Habitat LE 8.2 Ancient Woodland Compensation Planting LE 8.3 Woodland Mitigation Planting LE 8.4 Wetland / Fenland Creation LE 8.5 Ecology Pond (indicative symbol only) LE 8.6 Acid Grassland Soil Salvage 	<p>Hard Landscape Features (LE 7)</p> <ul style="list-style-type: none"> LE 6.4 Wet Grassland LE 6.41 Marsh and Wet Grassland - Coastal Grazing Marsh LE 7.4 Reinforced Earth Bund <p>Earthworks</p> <ul style="list-style-type: none"> Proposed Contours 	<p>Noise (E 1)</p> <ul style="list-style-type: none"> LE 8.7 Nitrogen Deposition (NDEP) Compensation Area E 1.2 Acoustic Barrier-Built Elements (typically inc. highway boundary fence) <p>Water (E 2)</p> <ul style="list-style-type: none"> Flood Compensation Areas (E 2-FCA) Flood Defence (E 2-FD) 	<p>Ecological (E 3)</p> <ul style="list-style-type: none"> E 3.2 Ecological Habitat Creation and Receptor sites for Protected Species E 3.2 Dormouse Boxes E 3.2 Bat Boxes E 3.2 Ecological Culvert E 3.2 Bat Barn Block E 3.2 Ecological Fencing (inc. highway boundary fence) E 3.2 Bat Owl Box
--	--	--	--	---	---	---

Client: national highways

Project: LOWER THAMES CROSSING

Status	DCO Examination	Original Size	A1	Revision	P02
Application Document Number	TR010032/APP/6.2	Scale	1:2500		
Drawing Title	ENVIRONMENTAL MASTERPLAN SECTION 1A SHEET 3				
Drawing Number	HE540039-CJV-EGN-S01_EN000000_Z-DR-ZZ-50002				

If you need help accessing this or any other National Highways information, please call **0300 123 5000** and we will help you.

© Crown copyright 2023.

You may re-use this information (not including logos) free of charge in any format or medium, under the terms of the Open Government Licence. To view this licence:

visit www.nationalarchives.gov.uk/doc/open-government-licence/

write to the **Information Policy Team, The National Archives, Kew, London TW9 4DU**, or email psi@nationalarchives.gsi.gov.uk.

Mapping (where present): © Crown copyright and database rights 2023 OS 100030649. You are permitted to use this data solely to enable you to respond to, or interact with, the organisation that provided you with the data. You are not permitted to copy, sub-licence, distribute or sell any of this data to third parties in any form.

If you have any enquiries about this publication email info@nationalhighways.co.uk or call **0300 123 5000***.

*Calls to 03 numbers cost no more than a national rate call to an 01 or 02 number and must count towards any inclusive minutes in the same way as 01 and 02 calls.

These rules apply to calls from any type of line including mobile, BT, other fixed line or payphone. Calls may be recorded or monitored.

Printed on paper from well-managed forests and other controlled sources when issued directly by National Highways.

Registered office Bridge House, 1 Walnut Tree Close, Guildford GU1 4LZ

National Highways Limited registered in England and Wales number 09346363